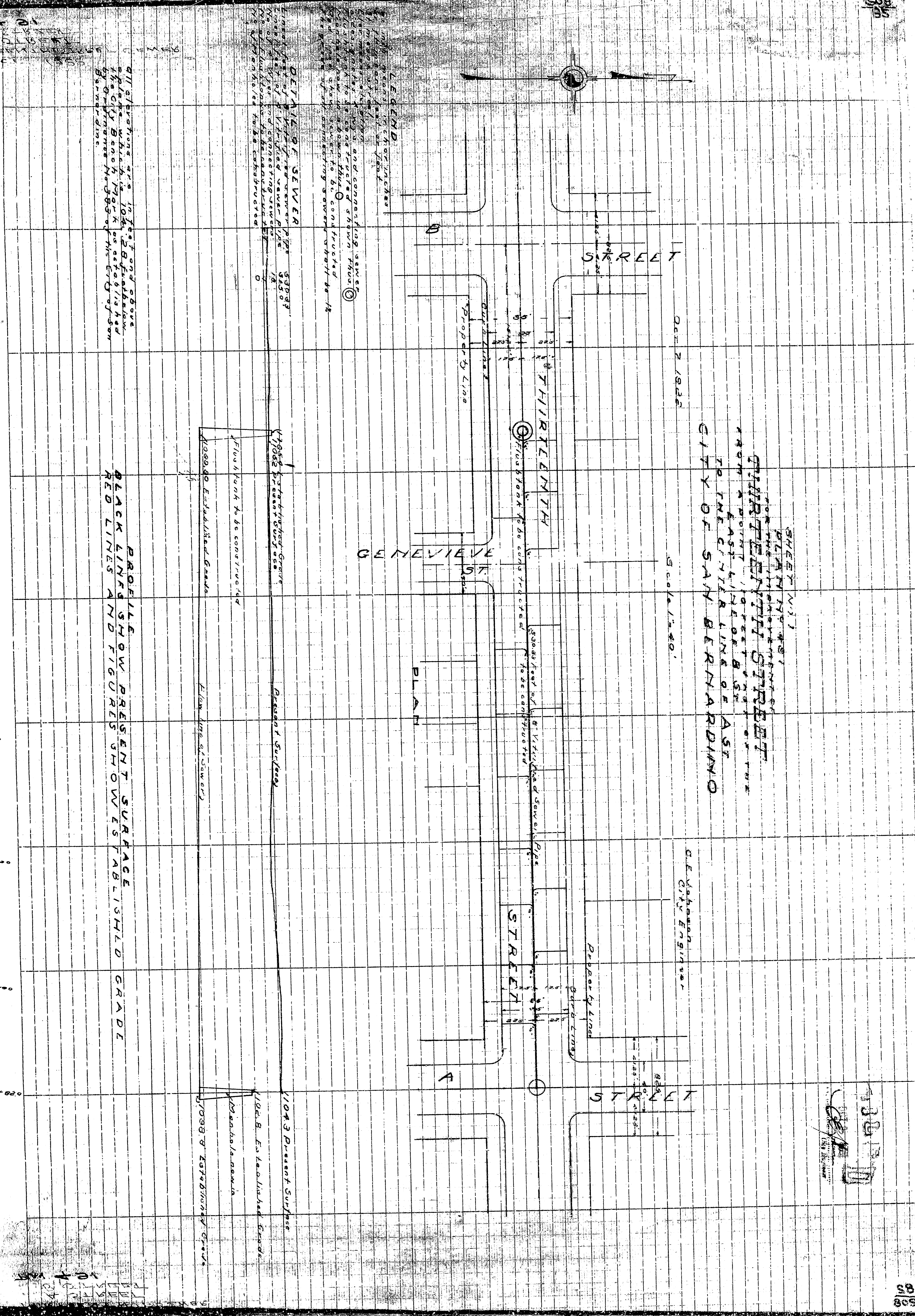


10430
10431
10432
10433
10434
10435
10436
10437
10438
10439
10440

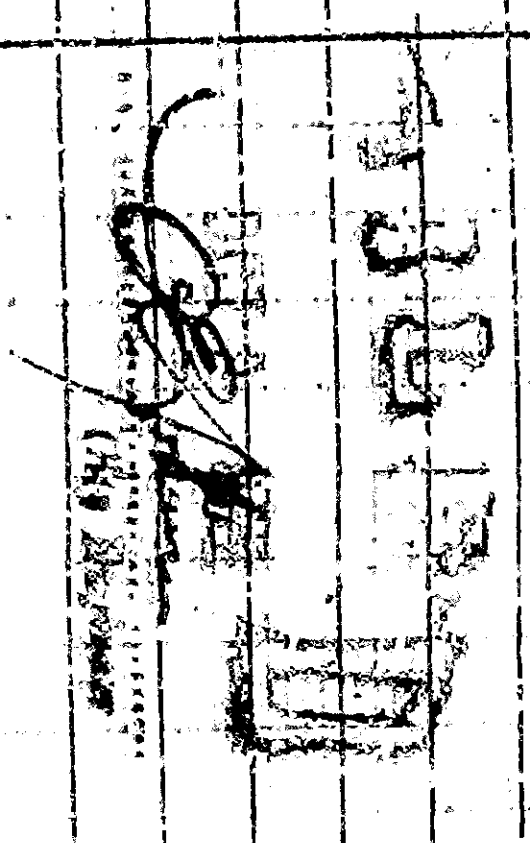


DETAILS OF SEWER
 1. The sewer shall be constructed in accordance with the specifications of the City of San Bernardino.
 2. The sewer shall be constructed in accordance with the specifications of the City of San Bernardino.
 3. The sewer shall be constructed in accordance with the specifications of the City of San Bernardino.

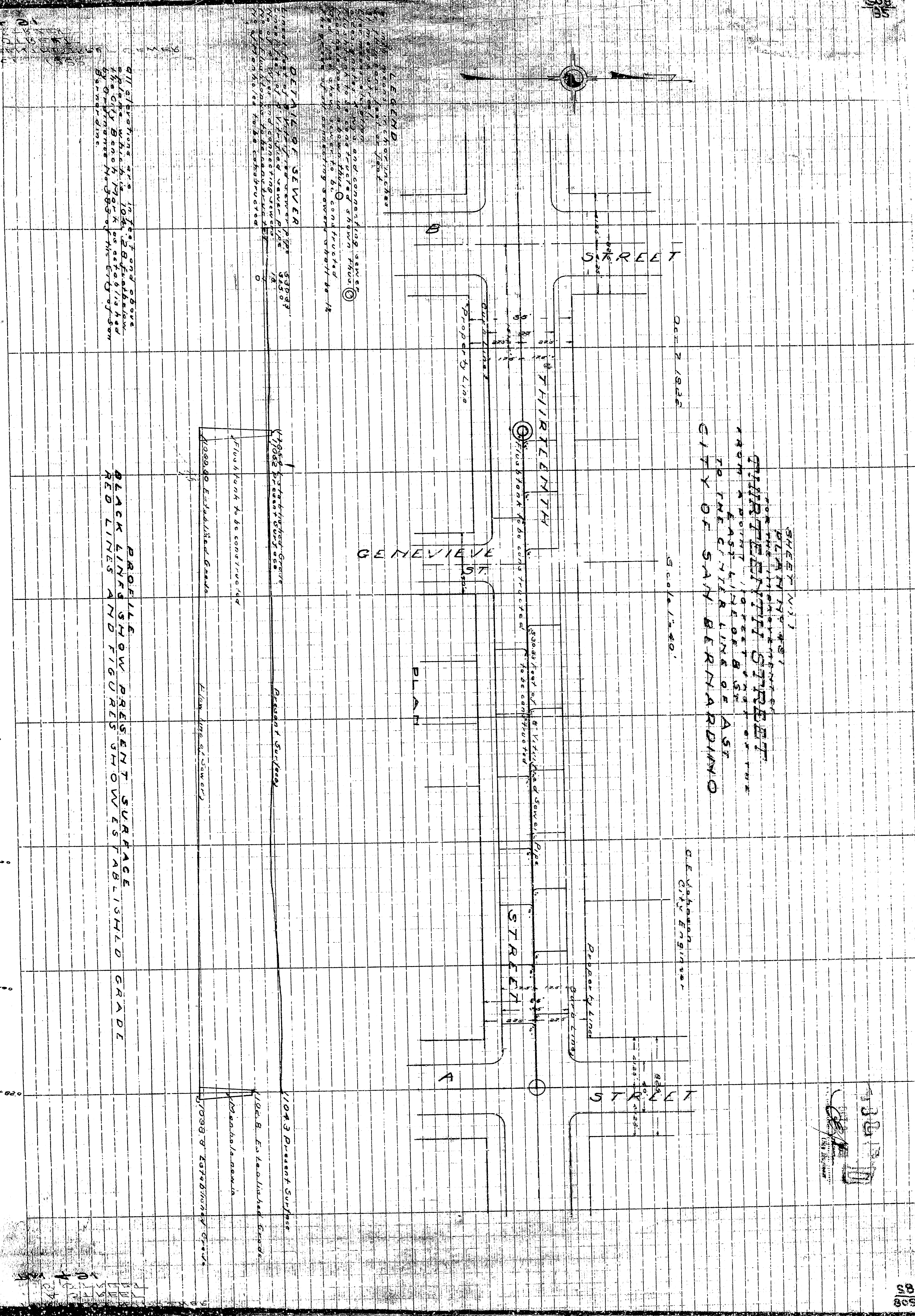
PROPOSED GRADE
 BLACK LINES SHOW PRESENT SURFACE
 RED LINES SHOW PROPOSED SURFACE

SHEET NO. 1
 PLAN OF THE
 THIRTEENTH STREET
 FROM A POINT
 EAST LINE OF THE
 TO THE CITY OF SAN BERNARDINO

C.E. VANDERBILT
 CIVIL ENGINEER



10430
10431
10432
10433
10434
10435
10436
10437
10438
10439
10440



DETAILED SEWER
 10430
 10431
 10432
 10433
 10434
 10435
 10436
 10437
 10438
 10439
 10440

PROPOSED SEWER
 10430
 10431
 10432
 10433
 10434
 10435
 10436
 10437
 10438
 10439
 10440

EXISTING SEWER
 10430
 10431
 10432
 10433
 10434
 10435
 10436
 10437
 10438
 10439
 10440

SHEET NO. 1
 PLAN OF THE
 THIRTEENTH STREET
 FROM A POINT
 EAST LINE OF THE
 TO THE CITY OF SAN BERNARDINO
 C. E. V. HANCOCK
 CIVIL ENGINEER

